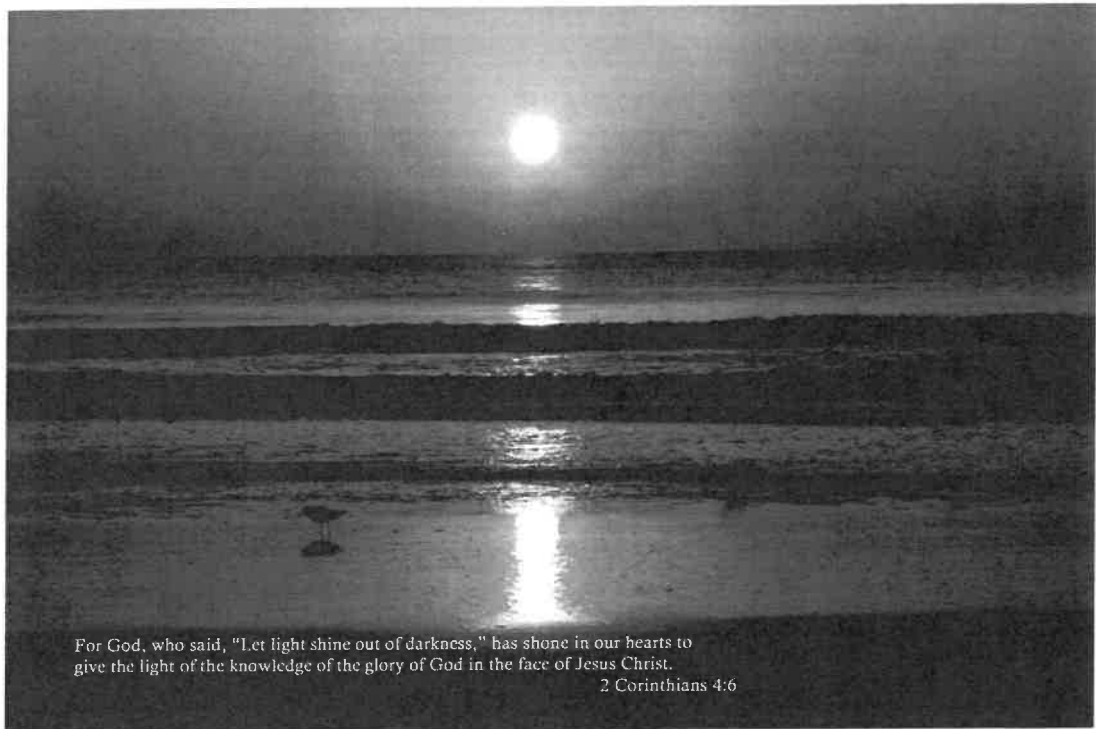




**Grace Lutheran
Church, Ormond
Beach, FL**

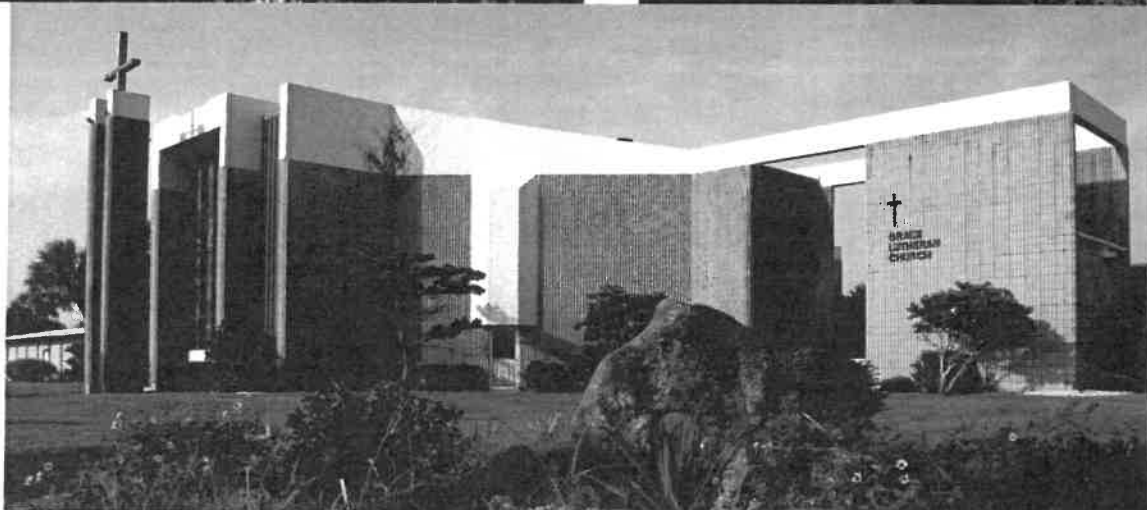
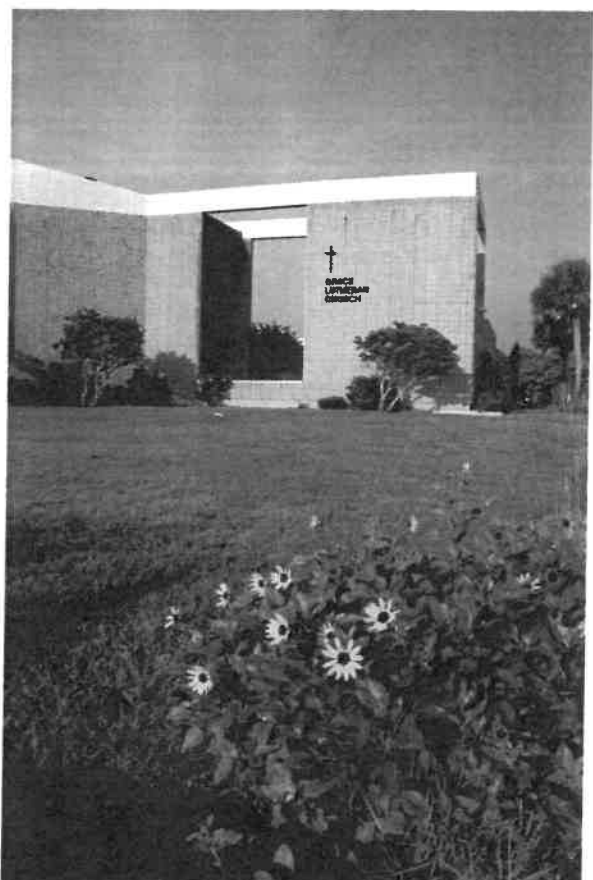
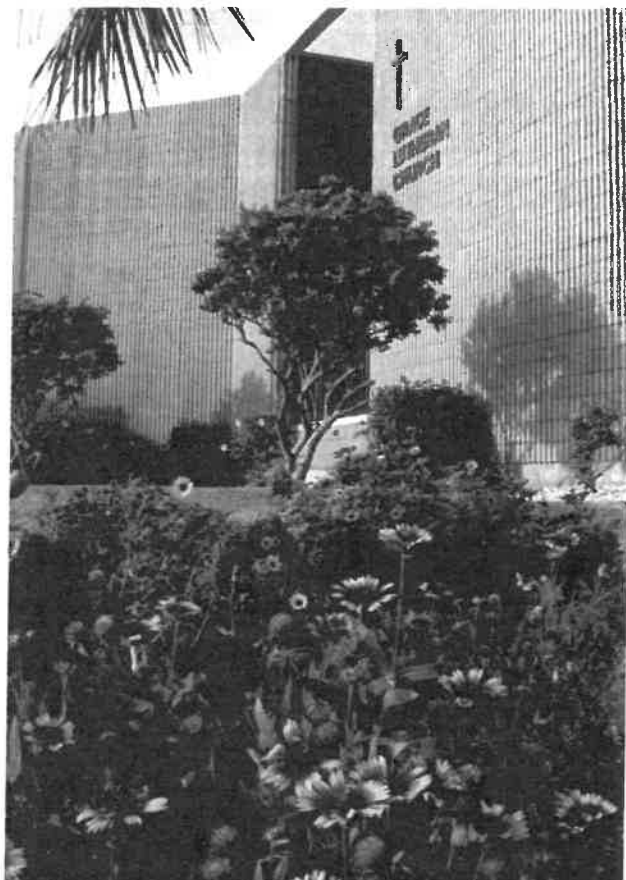


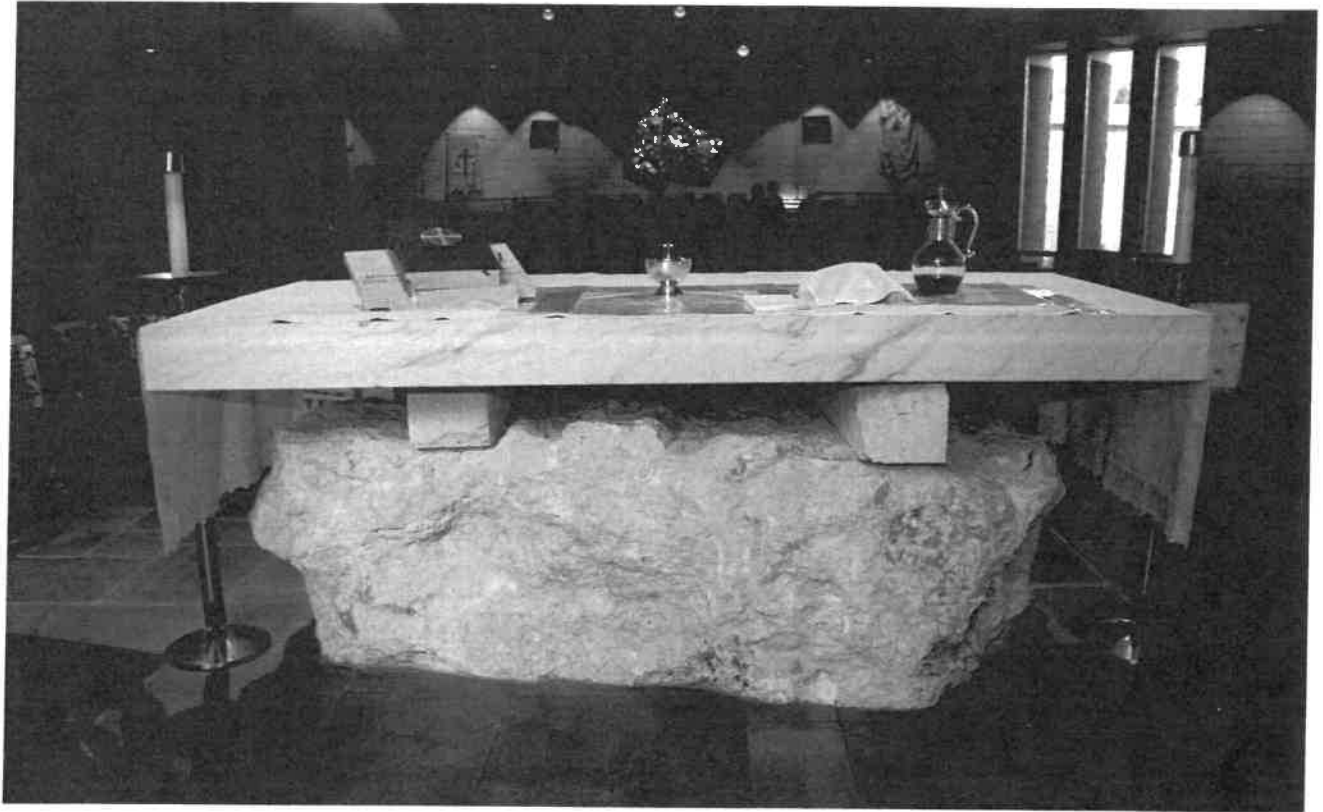
Each day as the sun rises over the Atlantic,
Grace Lutheran Church welcomes its warming
rays from its unique vantage point only feet
from the oceans edge.



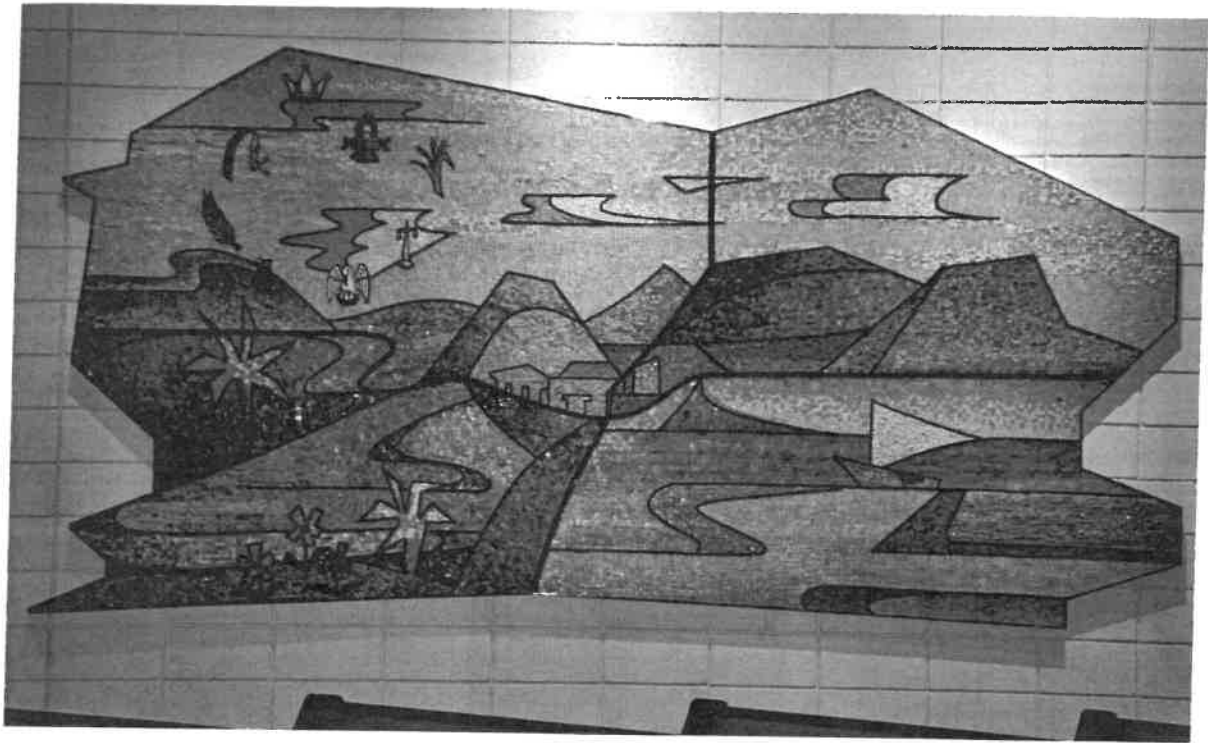
These are various frontal views of our beautiful Church. Grace faces east towards the Holy Land.

Grace Lutheran strives to be a green community with native plants on the property and an eco-friendly mindset.





The Altar is made from Italian marble and it sits upon a 5 ton piece of Florida Keystone that is in contact with the earth below.

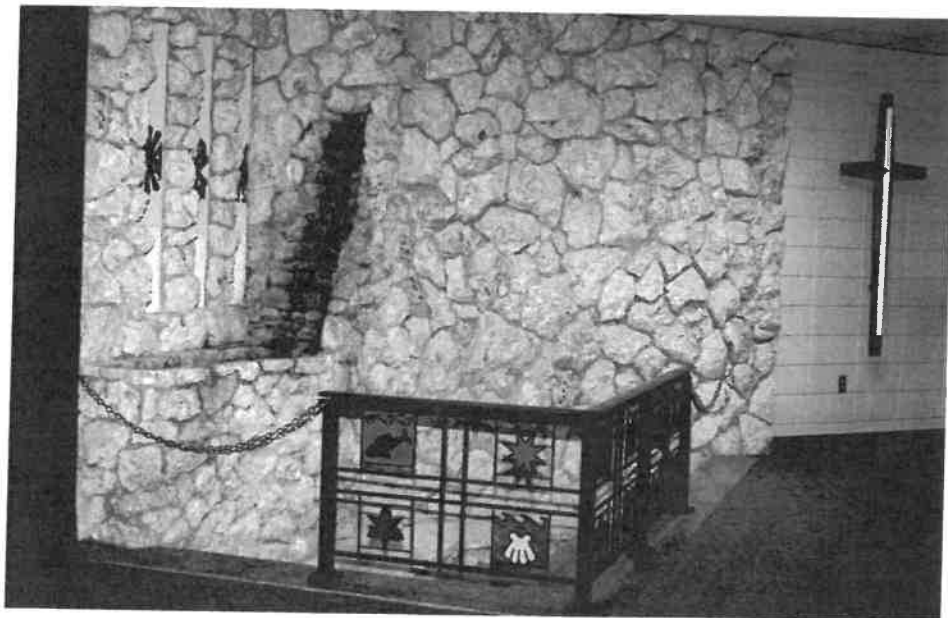


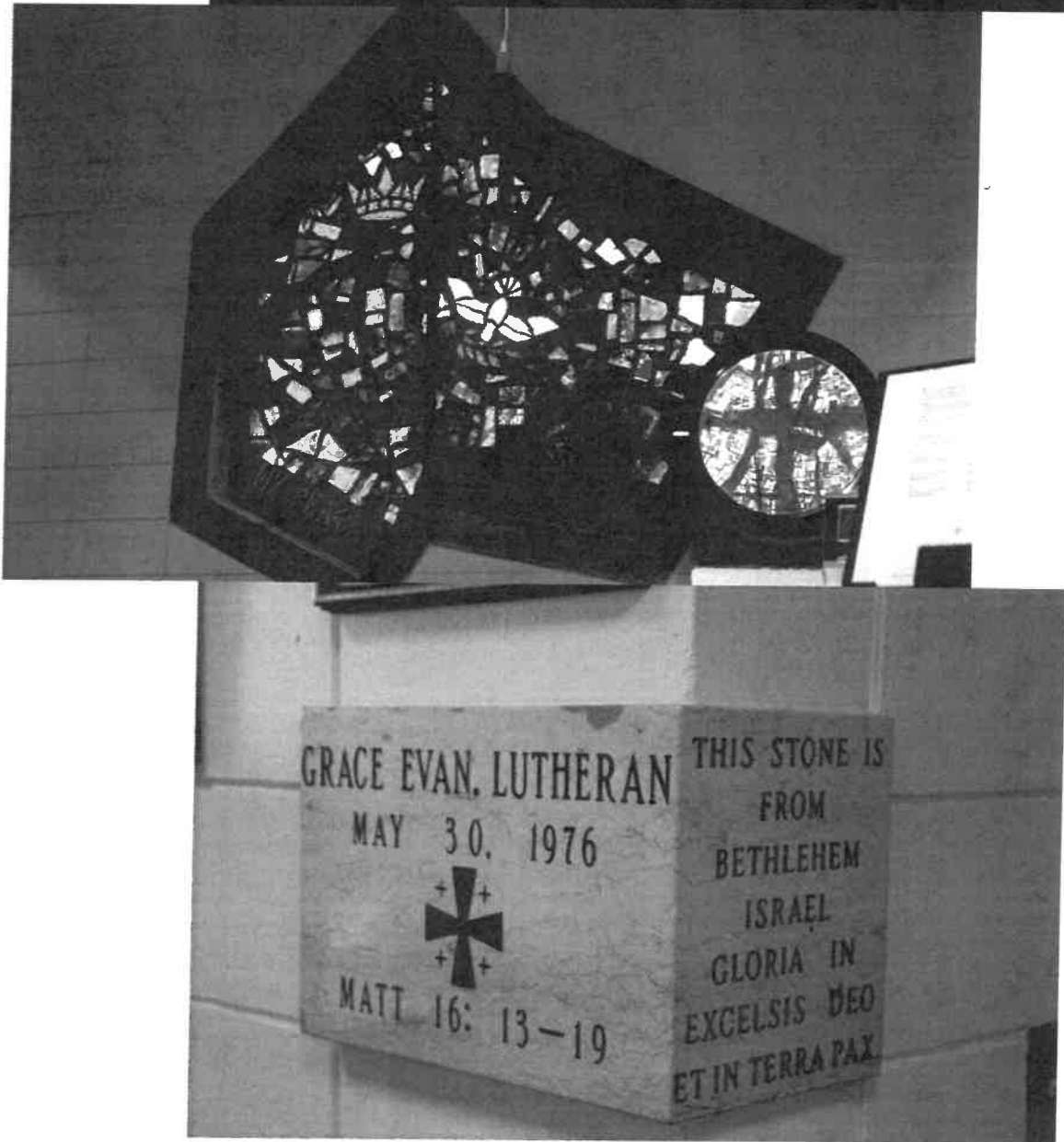
Various statues within the Narthex and Nave tell the story of Jesus' life.

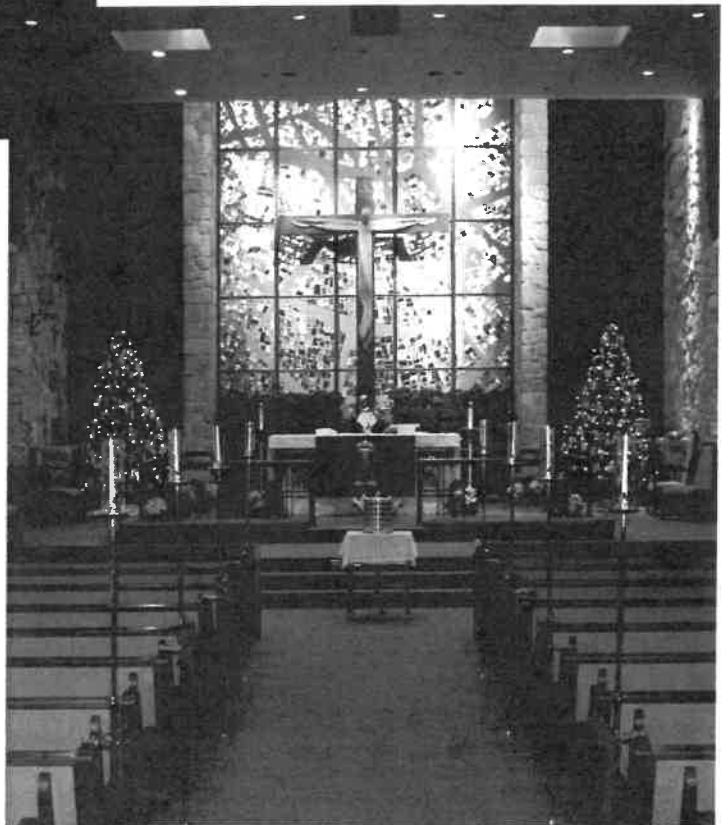
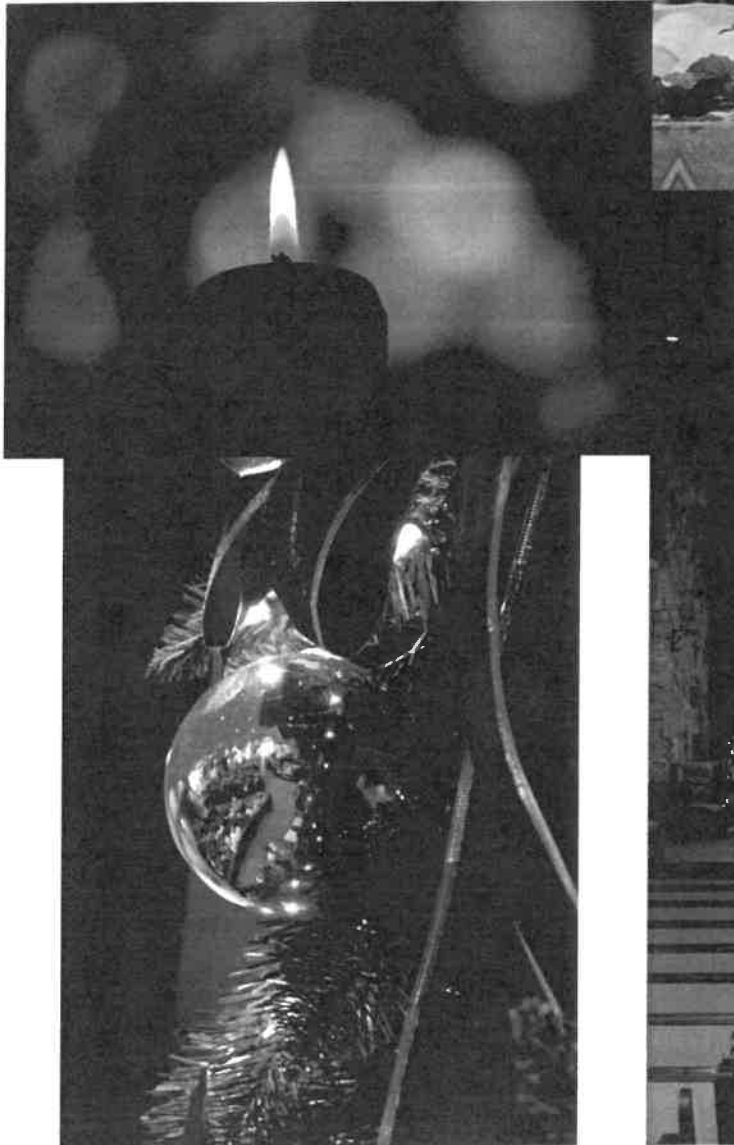




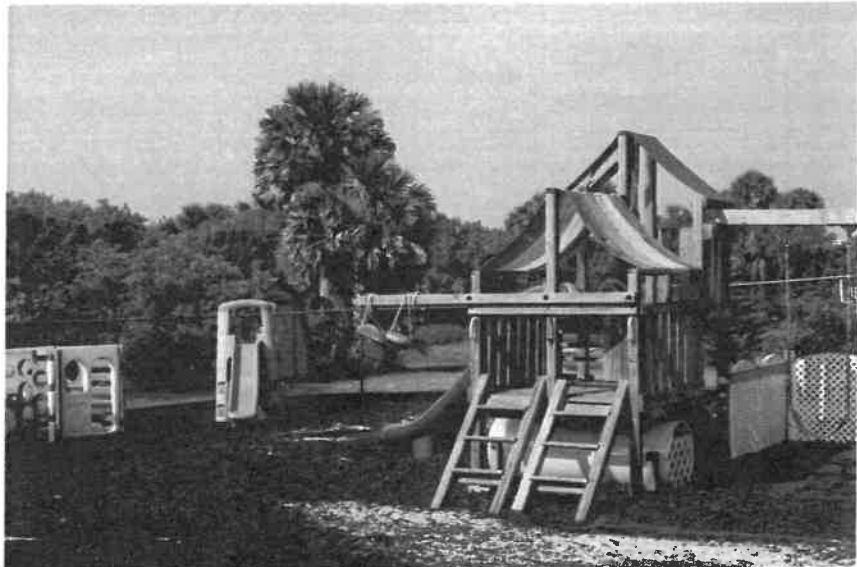
**The baptismal font
where many
children and adults
have accepted
Christ into their
lives.**







Noah's Ark Pre-School and our annual pumpkin patch



are just two of the many services offered

for the benefit of our community.





**Grace's best asset is how its congregation
cares about one another, the natural world
around them provided by God and the
community from which it serves!**





The greater Ormond Beach area is a wonderful place to call home.



The Garden of Resurrection is a special place at Grace. It speaks to a power that 'Death has no more dominion.' We hope you have enjoyed this look at our little church by the sea.



